

VAG TACHO USB Manual



1. System requirements:

VAGTACHO.EXE is a Windows based program that will work on any PC or laptop that has installed Microsoft Windows 98, 2000, ME, XP, Vista, not test for Win7.

Hardware requirements:

Any PC or laptop with Pentium / 133MHz processor or higher, and a free USB port.

2. USB Drivers installation:

Caution: This hardware interface requires drivers installation to work!
Please use only drivers that are supplied with this product. There are no other or better drivers.

For all Windows XP users:

Please disconnect your PC or laptop from Internet before install drivers !
Don't use Windows 'original' drivers! This is important!

How to install drivers:

Connect OBD interface to any free USB port. This will start Windows procedure to install drivers for the new hardware found. Tell to Windows where the drivers are on your harddisk. If Windows tells you that the driver is not certified by Microsoft just confirm that you want to install it anyway.

How to uninstall drivers:

If you wish to uninstall drivers, go to control panel and uninstall drivers with standard procedure.

3. How to work with the software:

Connect OBD connector to car diagnostic socket.

Then connect hardware interface to any free USB port of your PC or laptop.

Start program VagTacho.exe. Select ECU from menu. If you don't know type of kombiinstrument, press 'Connect Any Tacho' button. Program will try to connects any kombi and will display type of kombiinstrument. Then press disconnect, and select appropriate ECU from menu. There is no problem if you do wrong selection, but all other functions will work only if you select right ECU. After selecting ECU, press "Connect Selected ECU" button.

If everything is OK after 5 seconds you will see kombi info on display and program will try to log in to the ECU. After successful procedure, all useful buttons on screen will be enabled.

4. Commands:

4.1 Select ECU from Menu

This option selects type of ECU that user will try to connect.

* (There is selections for VW/Seat/Skoda immo box. It is usefull only if you have an already working key, and switch ignition ON with this key. Works only for Immo1 type immobilizers!)

4.2 File

User can save and read files to / from program memory buffer.

4.3 Connect any tacho button

By pressing this button user can connects to kombi, and read info for any car's kombiinstrument. This is useful when type of kombi is unknown.

4.4 Connect Selected ECU

By pressing this button user will connects kombi or immo box which is selected from menu.

4.5 Read Info

After pressing this button, program will shows ECU info. Press it twice to read whole information.

4.6 Read PIN

Program will try to read PIN code for log in to the selected ECU. If the operation was successful, PIN code will be shown on display.

4.7 Change Mileage

This will change mileage counter on kombi display. After pressing, program will try to read actual mileage, then user may enter 'new' mileage and press 'Continue' button. For some kombiinstruments it is required to disconnect and reconnect car battery after this procedure.

4.7 Stop Action

Pressing this button will cancel any command that is in progress. Not all commands can be stopped, it is useful only for some of them.

4.8 Read eeprom

This will read ECU eeprom memory and store data into memory buffer.

It is usefull if program is logged in to the tacho, but can't read PIN code automatically.

User can save whole eeprom data to a file.

4.9 Program New Key

This will open a new window. User must enter correct PIN code , and number of new keys to program. Then press OK , and read messages from software.

The number of all programmed keys must be greater than zero, otherwise there are some error.

Note: If you have read PIN code before this procedure, you have to disconnect, turn OFF ignition, then ON and connect again with "Connect any tacho" for tacho, or "Connect selected ECU" for immo box.

4.10 Disconnect

End of communication command.

4.11

View memory buffer

This will show memory data on screen in another window.

4.12

Write eeprom

Same as its name. Upload file in memory first!

4.13

Clear ECU errors

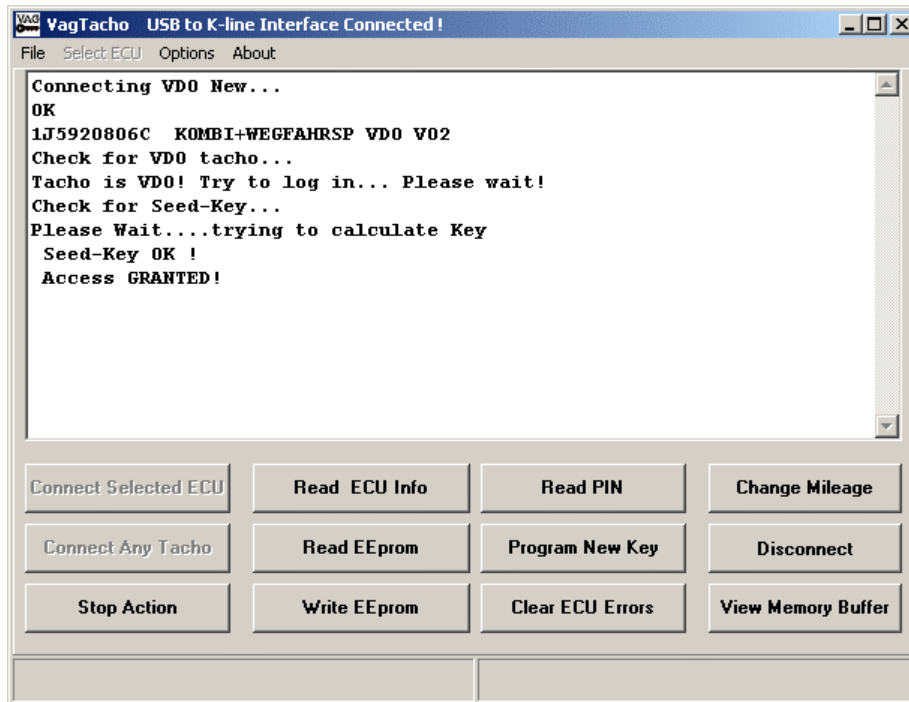
This command will erase all trouble codes that are stored in ECU memory.

5. Error Messages:

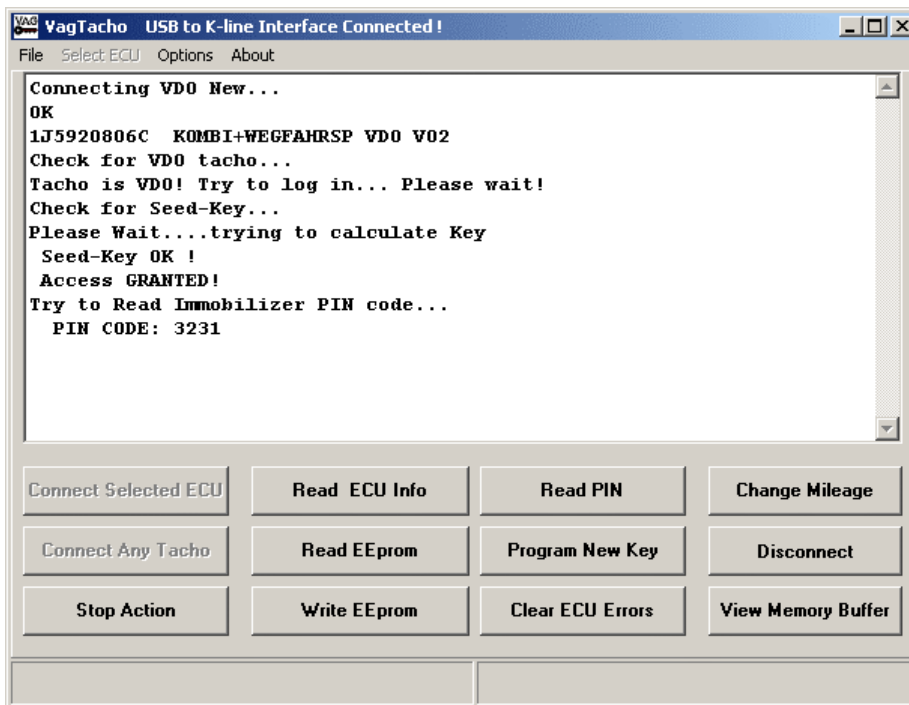
In case of receiving any error message, user can try to repeat same operation again.

If error message continue to appear on screen, this means that there are some fatal error, or kombiinstrument or ECU is unknown or program can't log in.

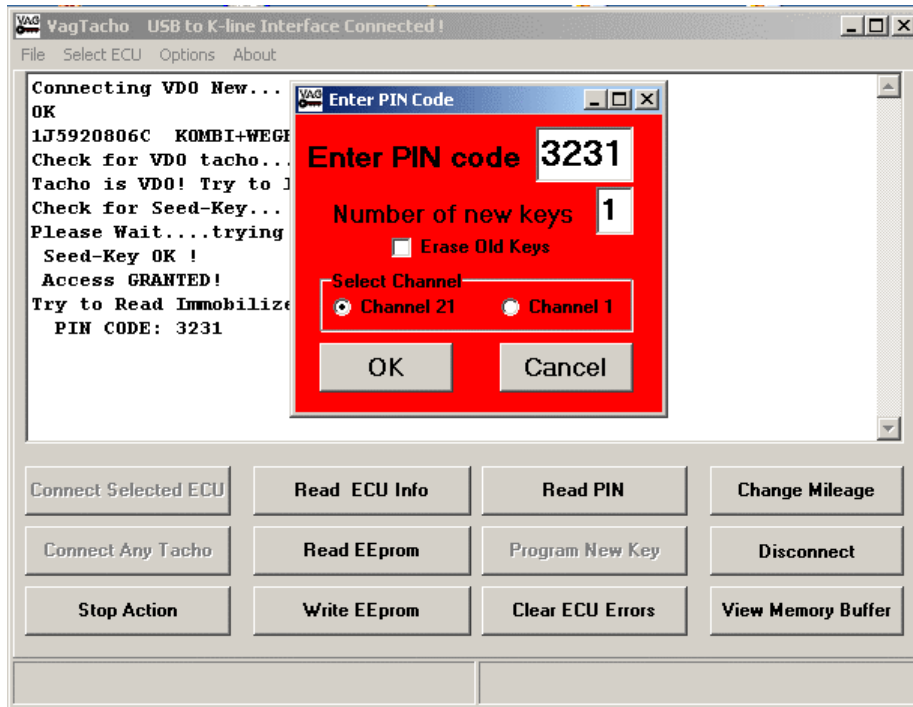
6. Usage Example:



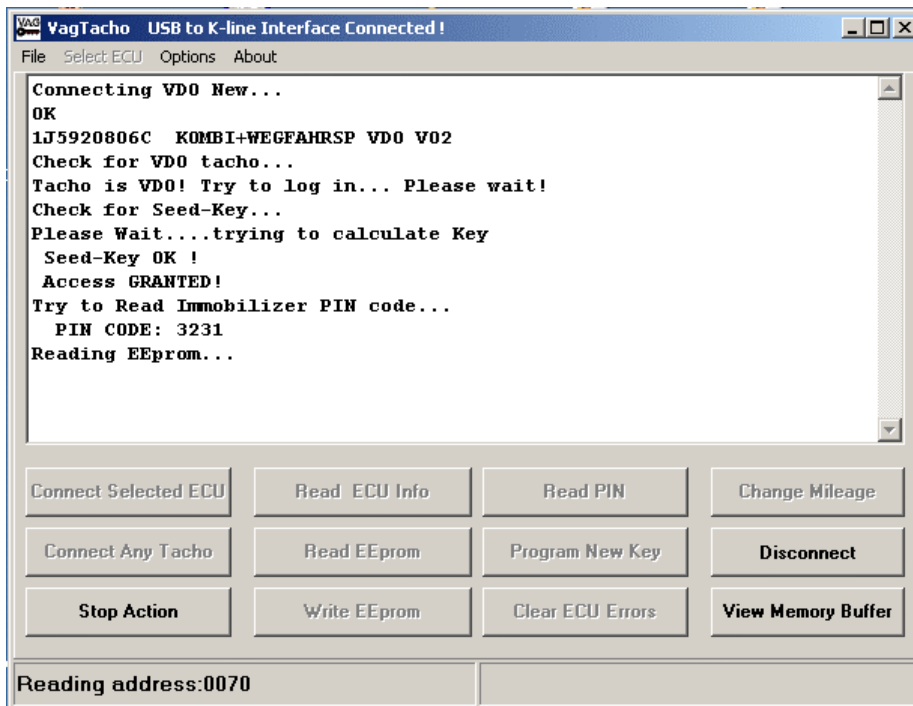
Connected to a VDO New dashboard



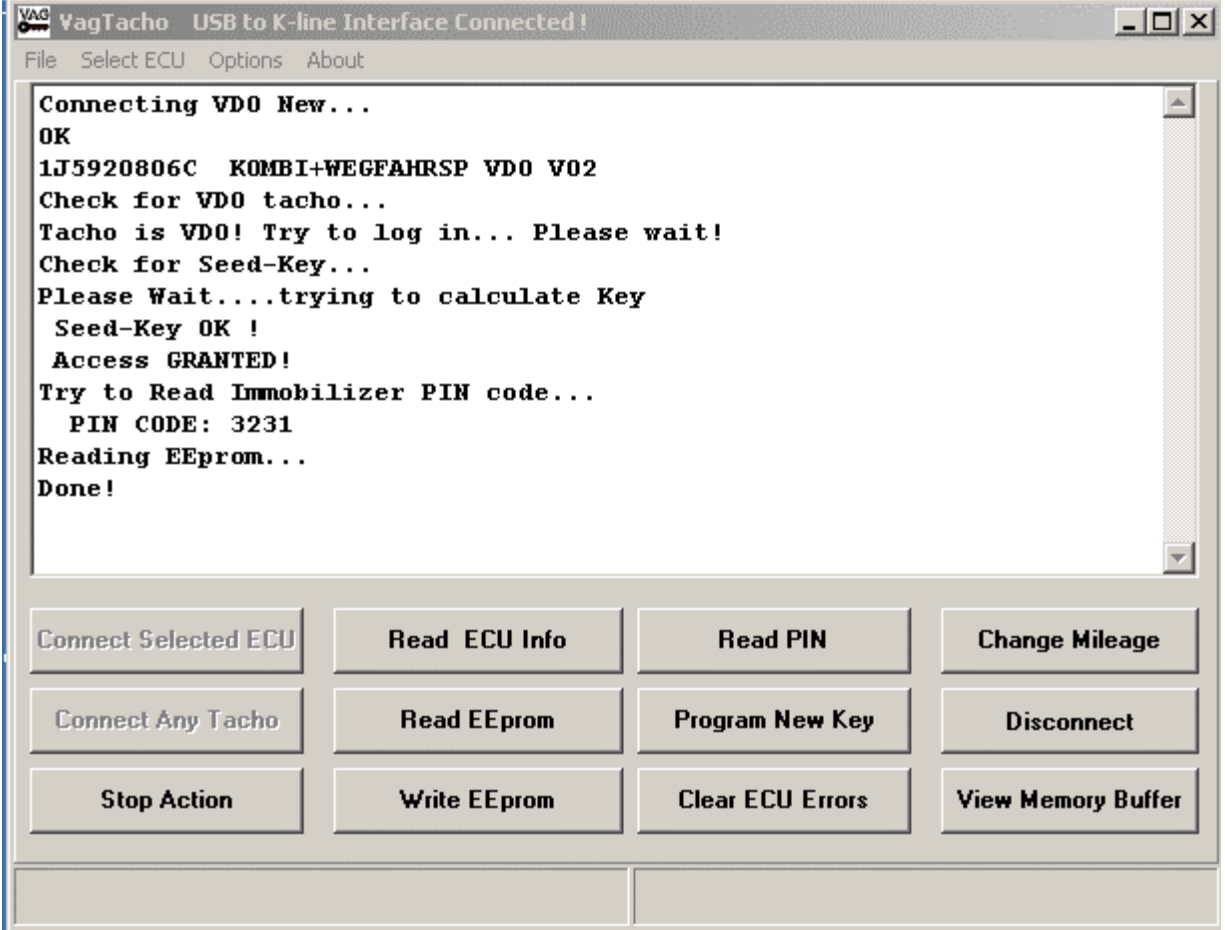
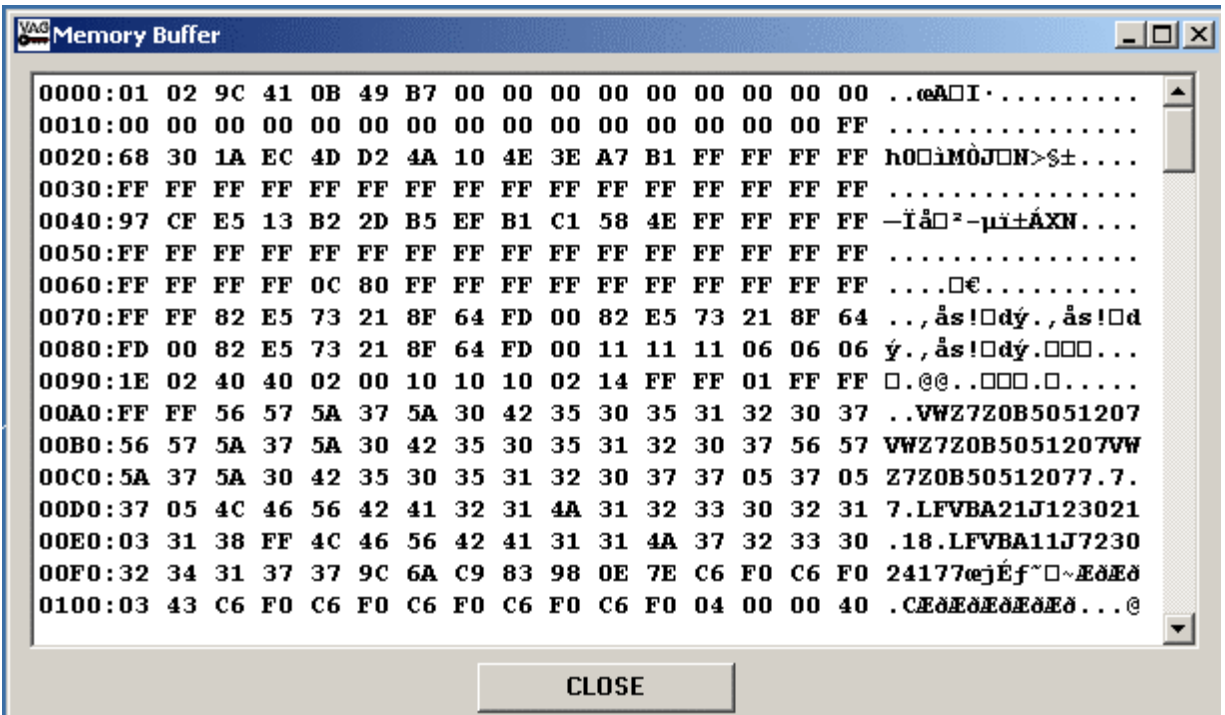
Reading of the immo pin code which is needed to learn new keys to it



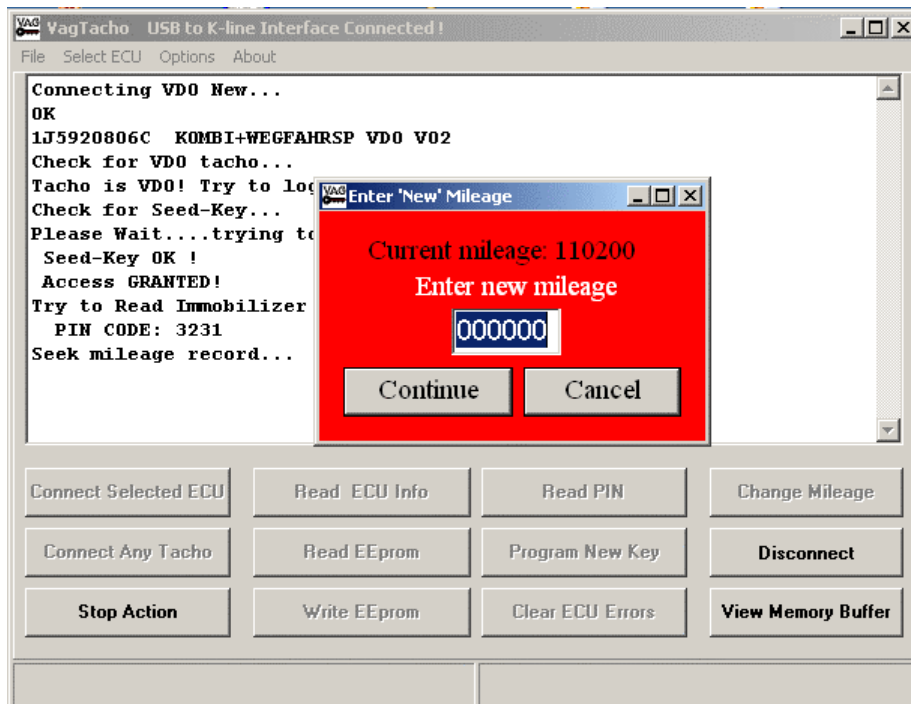
And adapting new keys with this pin



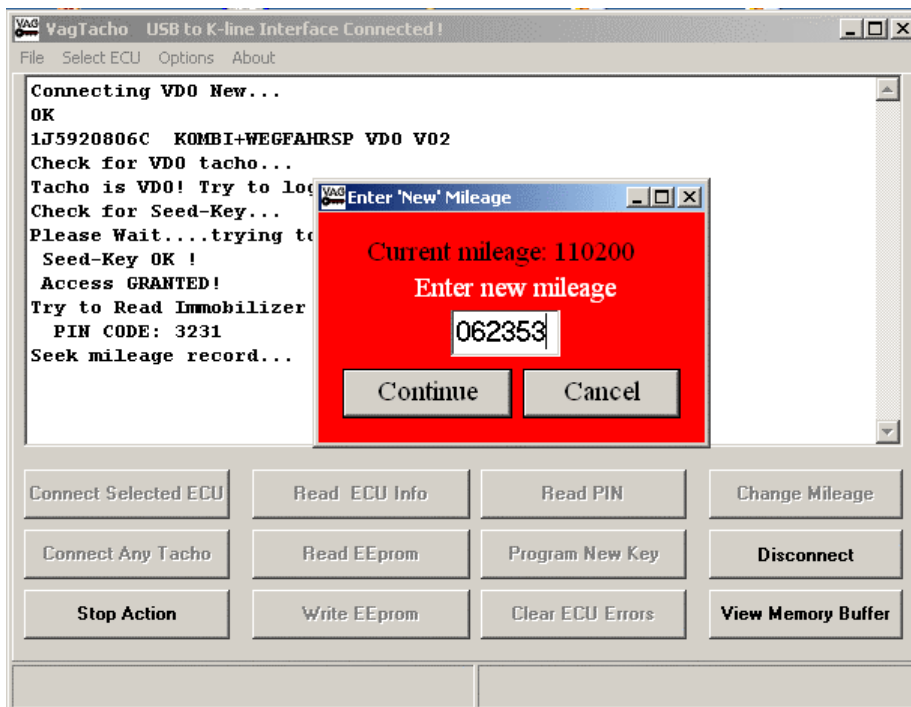
Reading eeprom of the dashboard



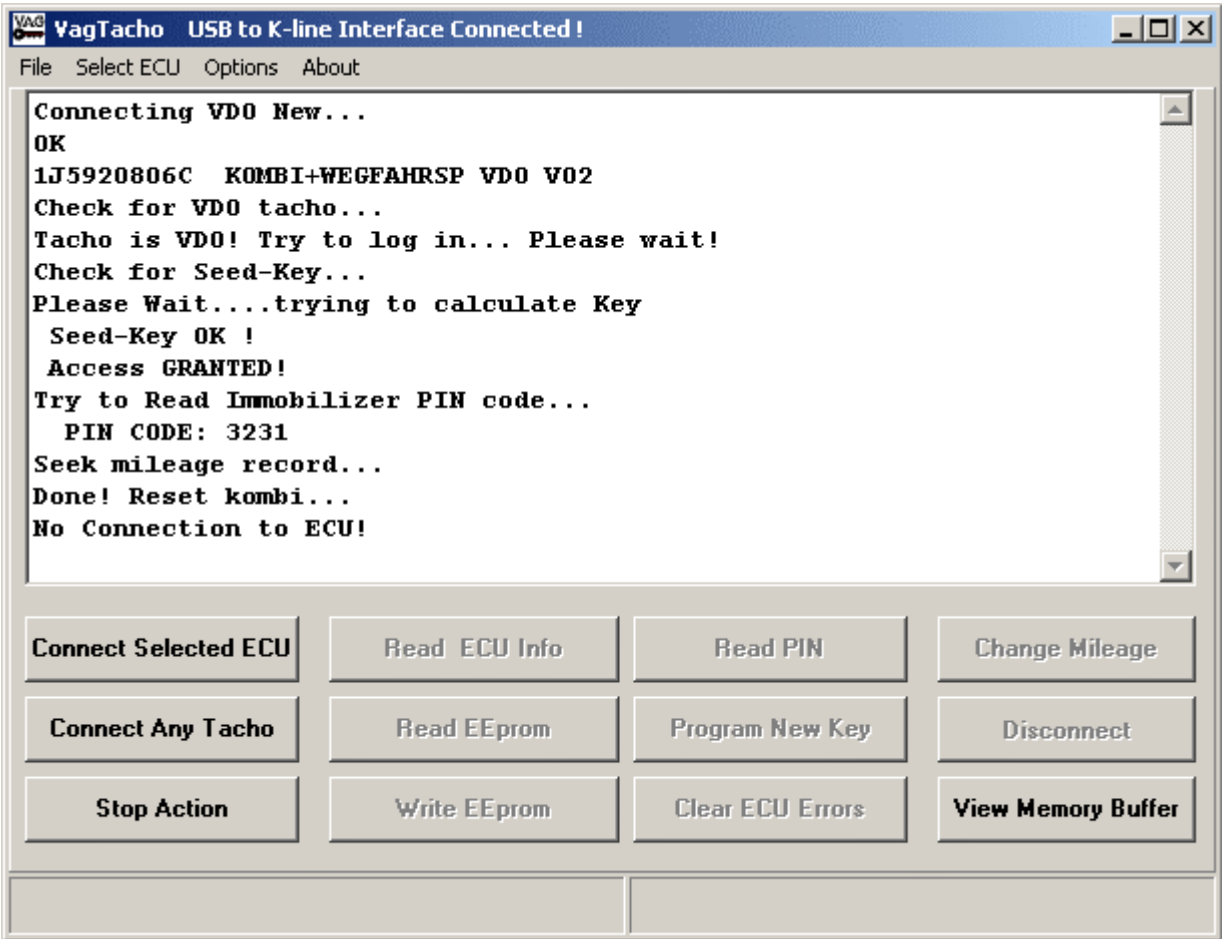
Show read eeprom in the memory buffer



Reading out current mileage



Entering new value...



...and writing it



Before ...



... and after

Caution:

This software may not works on some types kombiinstruments.
Also some automated functions also may not be executed due to variety of types and software versions. The authors of this software has no ability to test all existing types and models of kombiinstruments, and therefore there is no any guarantee that desired actions will be executed.

Warning:

For all Motometer dashes:

There is some very important information in eeprom memory of this types kombiinstruments. If you erase eeprom, or corrupt original data ,in some cases you may not be able to write or read eeprom at all ! Message "ACCESS DENIED" will be show when you select tacho !

Important note:

When try to read VDO NEW dash with Seed - Key protection, user have to try to connect several times(up to 10) before be able to read PIN or Change mileage. After each unsuccessful attempt, just press "Connect selected ECU" again and again, until see message " Seed-Key OK! Access GRANTED ! "
Number of attempts is unlimited. Usually access is granted after 2 - 6 attempts.